

NSB 485 ARCHITECTURAL GATEWAY



Models shown: 1. PWGW DIN NC8

WARRANTY

3-year limited warranty. Complete warranty terms located at: <https://www.acuitybrands.com/support/warranty>

NOTE

Actual performance may differ as a result of end-user environment and application. Specifications subject to change without notice.

OVERVIEW

The NSB 485 DIN-mount Architectural Gateway provides a connection from your Choreo or Cognito²-based architectural lighting system to the NSB 485 wall stations using a multi-drop data bus.

The Gateway has four separate buses, each accommodating up to 16 inserts. The Ethernet port provides connection back to the main lighting network and communication with the Cognito² or Choreo controller.

The device comes several of configurations with or without auxiliary contact closures & buttons.

FEATURES

- Power and network connectivity for NSB 485 wall station inserts (PWWSI N485), Contact Closure Inputs/Test Buttons
- Greatly extends the number of NSB wall stations connected to a Choreo or Cognito² controller using a single Ethernet connection, when compared with PWWSI NPOE
- Allows using legacy multi-drop wiring where PoE home-runs are not feasible
- Use third-party buttons/dry contact closure to trigger memories recorded on controller [NC8 and NC16 models]
- Increase the number of A/V contacts for your Choreo or Cognito² controller
- Stand-alone mode with 8 or 16 momentary buttons and LED indicators allows the Gateway to be used as its own Button Station [NC8 and NC16 models]
- Connected NSB wall stations are discovered and configured on the Choreo or Cognito² controller; Pathscape software can discover and identify them
- Compression-screw and Insulation Displacement Contact connectors for station buses
- Mounts to standard 35mm DIN rail
- Operates on 24VDC

ORDERING INFORMATION

PWGW		EXAMPLE: PWGW DIN NC8	
Series	Form Factor	Model	
PWGW Pathway Architectural Gateway	DIN DIN-mount	N	NSB Architectural Gateway; no additional contact closure inputs/buttons (4.5")
		NC8	NSB Architectural Gateway with 8 Contact Closures/Buttons (6.25")
		NC16	NSB Architectural Gateway with 16 Contact Closures/Buttons (8")

Accessories			
PWPWR DIN TERM 100W 24VDC	Power Supply, DIN-mount, Compression Fit Terminal, 100 Watts, 24 Volts DC	PWENC LRG VER	DIN System Enclosure, Large 18.5" x 31.5" x 6.25", Vertical Rails
PWENC SHELF HOR	DIN System Enclosure, 2-RU Shelf unit with 2x16.5", Horizontal Rails	PWCON SPARE CSC5 Q4	Connector, Spare, 5-Pin Compression Screw Connector, (Qty 4)
PWENC SML VER	DIN System Enclosure, Small 10" x 13" x 4.5", Vertical Rails	PWCON SPARE IDC6 Q2	Connector, Spare, 6-Pin Insulation Displacement Contact Connector, (Qty 2)
PWENC MED VER	DIN System Enclosure, Medium 10" x 23" x 4.5", Vertical Rails	PWCON SPARE CSC6 Q2	Connector, Spare, 6-Pin Compression Screw Connector, (Qty 2)
PWENC SML HOR	DIN System Enclosure, Small 10" x 13" x 4.5", Horizontal Rails		
PWENC MED HOR	DIN System Enclosure, Medium 10" x 23" x 4.5", Horizontal Rails		

SPECIFICATIONS

Electrical

Input Ratings 24VDC power input
72W maximum power consumption; 8W per gateway plus 1W per insert (64 maximum) on the 4-port station bus network

Cabling Standard CAT5/5e/6 Cable, 492 ft (150 m) maximum, or Retrofit onto existing 3-pair Belden 9773 or equivalent, 984 ft (300m) maximum

Regulatory Compliance CE

Mechanical

Dimensions **PWGW DIN N** 4.5" W x 4" H x 1.9" D (113mm W x 103mm H x 48mm D)
PWGW DIN NC8 6.25" W x 4" H x 1.9" D (159mm W x 103mm H x 48mm D)
PWGW DIN NC16 8" W x 4" H x 1.9" D (203mm W x 103mm H x 48mm D)

Weight 1.0 lbs (0.45 kg)

Environmental

Operating Temperature 14°F to 113°F (-10°C to 45°C)

Relative Humidity 5-95%, non-condensing

Standard Compliance RoHS 2011/65/EU + A1 2015/863

General

Compliance IEEE 802.3 Ethernet
California Title 1.81.26, Security of Connected Devices

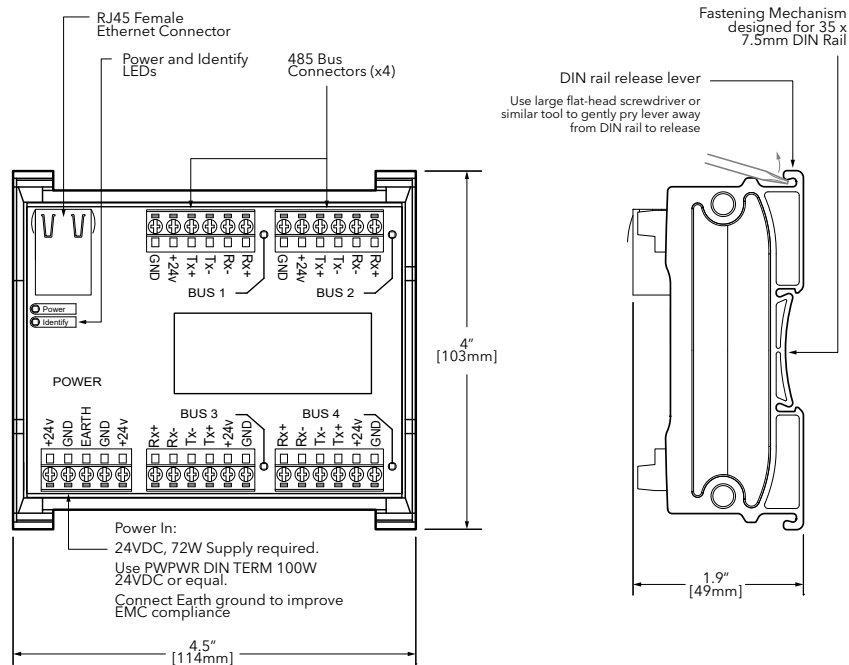
PART NUMBER CROSS-REFERENCE

PREVIOUS	NEW	
Part Number	Catalog Number	Description
0700-5390	PWGW DIN N	Architectural Gateway, DIN-mount, NSB (4.5")
0700-5392	PWGW DIN NC8	Architectural Gateway, DIN-mount, NSB w 8 Contact Closures (6.25")
0700-5393	PWGW DIN NC16	Architectural Gateway, DIN-mount, NSB w 16 Contact Closures (8")

DIMENSIONS

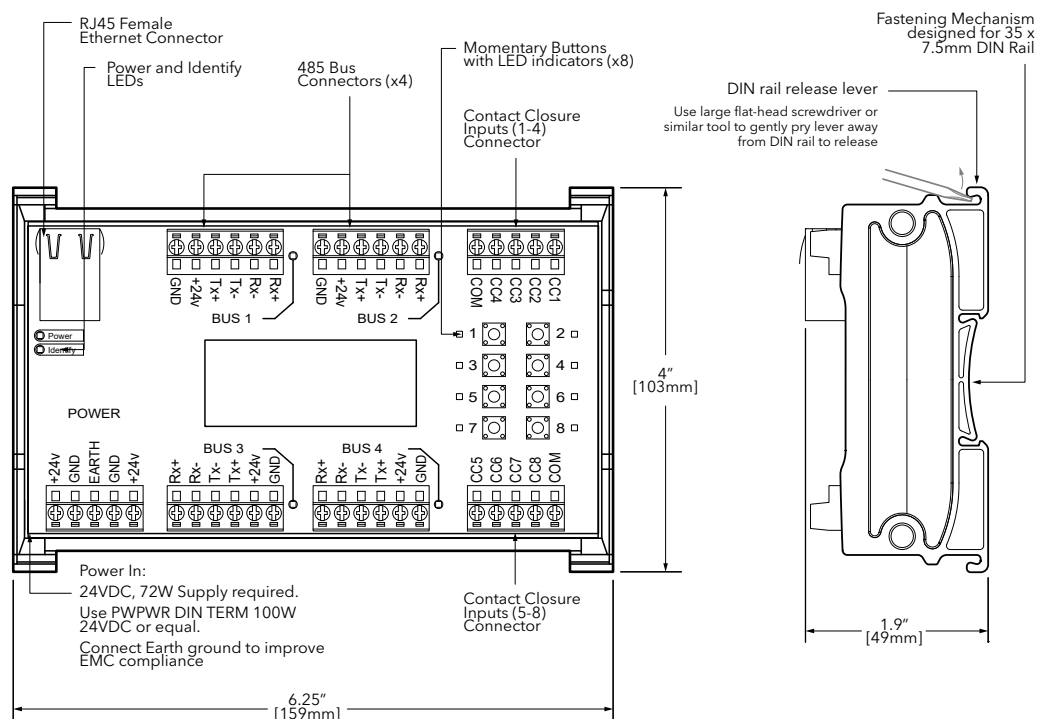
PWGW DIN N

- Four buses, each capable of powering 16 inserts, 64 total
- Connected stations are discoverable and configurable on Choreo and Cognito² controllers
- Connected NSB stations can be discovered and identified in Pathscape
- Mixes well with NSB PoE (PWWSI NPOE) devices on same network



PWGW DIN NC8

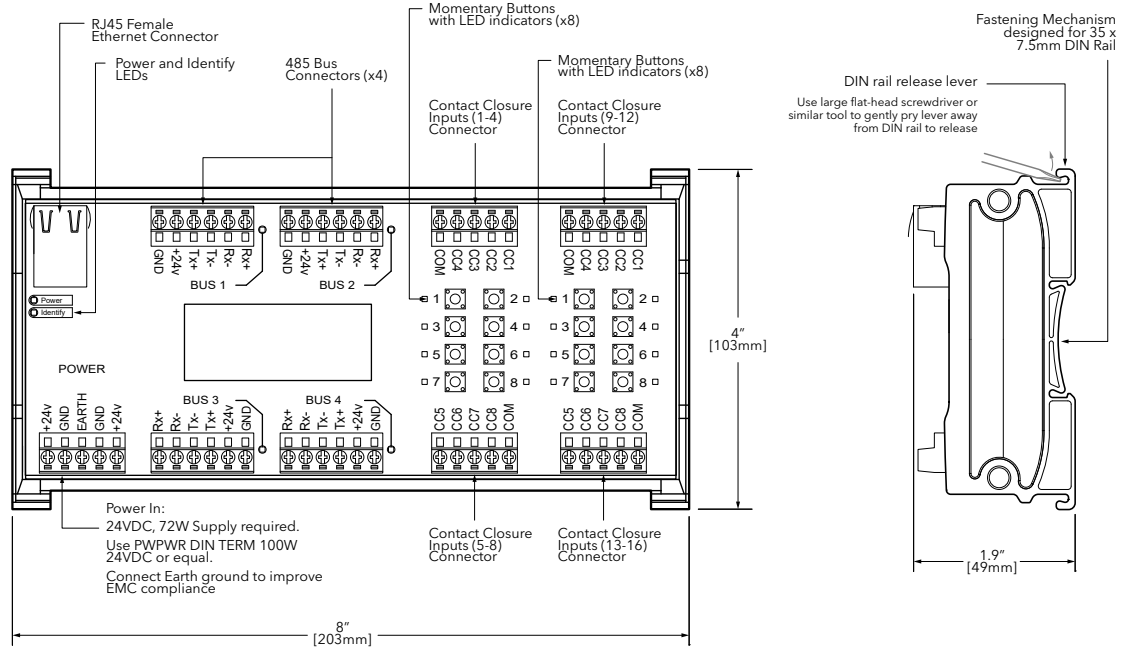
- Four buses, each capable of powering 16 inserts, 64 total
- 8 buttons for local control of Choreo or Cognito² memories for testing
- Connections for 8 momentary contact closures
- Connected NSB stations can be discovered and identified in Pathscape
- Mixes well with NSB PoE (PWWSI NPOE) devices on same network



DIMENSIONS

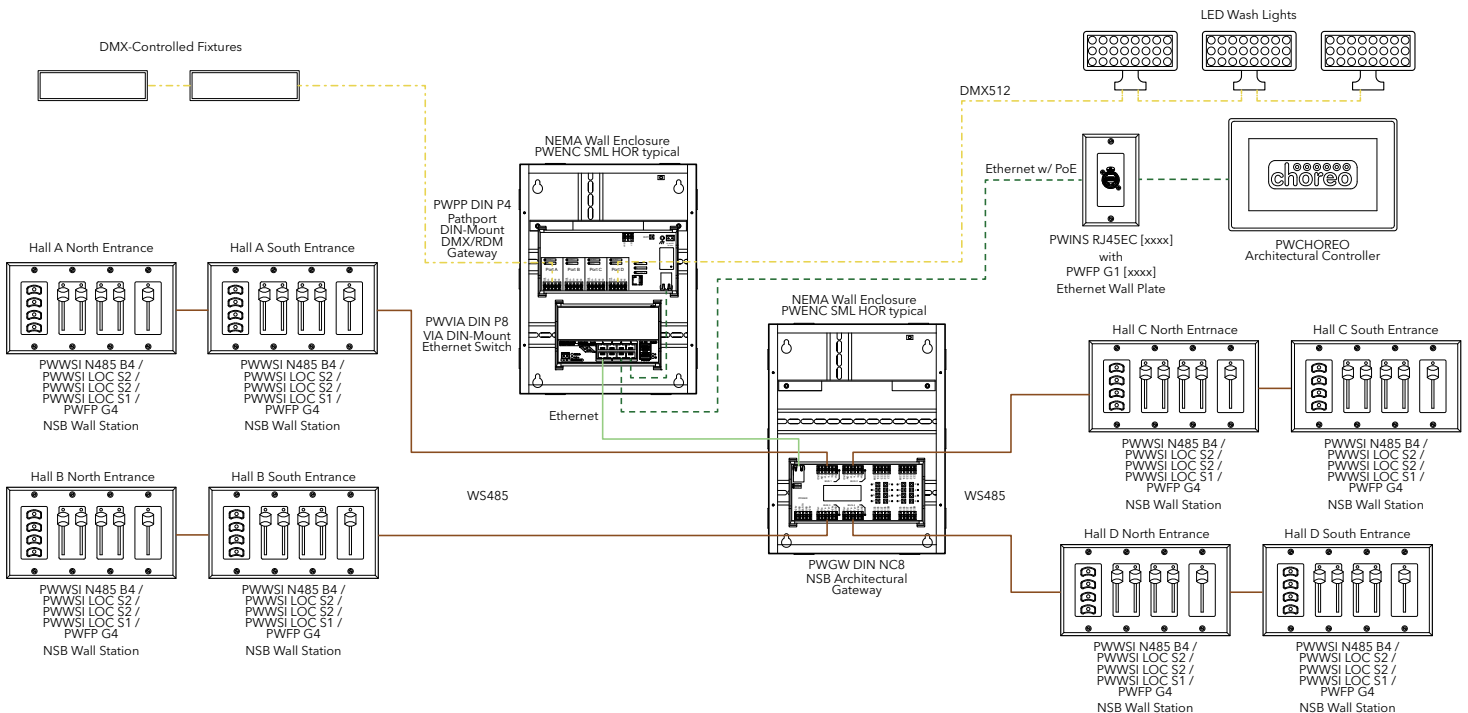
PWGW DIN NC16

- Four buses, each capable of powering 16 inserts, 64 total
- 16 buttons for local control of Choreo or Cognito2 memories for testing
- Connections for 16 momentary contact closures
- Connected NSB stations can be discovered and identified in Pathscape
- Mixes well with NSB PoE (PWWSI NPOE) devices on same network



APPLICATION RISER

NSB Architectural Gateway in Divisible Ballroom



APPLICATION RISER

NSB Architectural Gateway in Exhibit Hall with Interactive Triggers

